



FIFA

For the Game. For the World.



Law 5 The Referee

- Powers and Duties
- Advantage
- Injuries
- Cooperation with Assistant Referees
- Cooperation with Fourth Official
- Team officials
- Trifling (minor) offences
- More than one offence occurring at the same time
- Guidelines for referees



“The referee enforces the Laws of the Game”

- **the Referee is authorised to stop play, if in his opinion, the floodlights are inadequate**

“The referee acts on the advice of assistant referees regarding incidents that he has not seen”

- **if a referee is temporarily incapacitated for any reason, play may continue under the supervision of the assistant referees until the ball next goes out of play**



Powers and Duties

4

“The referee takes disciplinary action against players guilty of cautionable and sending-off offences”

- the referee has the power to show yellow or red cards during the half-time interval and after the match has finished as well as during extra time and kicks from the penalty mark, since the match remains under his jurisdiction at these times**

“The referee stops, suspends or terminates the match because of outside interference of any kind”

- if an object thrown by a spectator hits the referee or one of the assistant referees or a player or team official, the referee may allow the match to continue, suspend play or abandon the match depending on the severity of the incident. He shall, in all cases, report the incident(s) to the appropriate authorities**
- if a spectator blows a whistle and the referee considers the whistle interfered with play (e.g. a player picks up the ball with his hands, assuming that play has been stopped), the referee shall stop the match and restart the play with a dropped ball from the position of the ball when play was stopped***

"The referee:

- **allows play to continue when the team against which an offence has been committed will benefit from such an advantage and penalises the original offence if the anticipated advantage does not ensue at that time**
- **takes disciplinary action against players guilty of cautionable and sending-off offences. He is not obliged to take this action immediately but must do so when the ball next goes out of play"**



Advantage

7

In other words...

Allow play to continue when the team against which an offence has been committed will benefit from such an advantage.

Penalise the original offence if the anticipated advantage does not develop or continue over the next several seconds.





Advantage

Referees should consider the following circumstances in deciding whether to apply the advantage or stop play:

- **the severity of the offence. If the infringement warrants an expulsion, the referee shall stop play and send the player off unless there is a subsequent opportunity to score a goal**
- **which team is in possession of the ball after the infringement has been committed. Probable control of the ball by the player or team-mates**
- **the position where the offence was committed: the closer to the opponent's goal, the more effective it can be**
- **the chances of an immediate, dangerous attack on the opponents' goal**
- **the atmosphere of the match**



Advantage

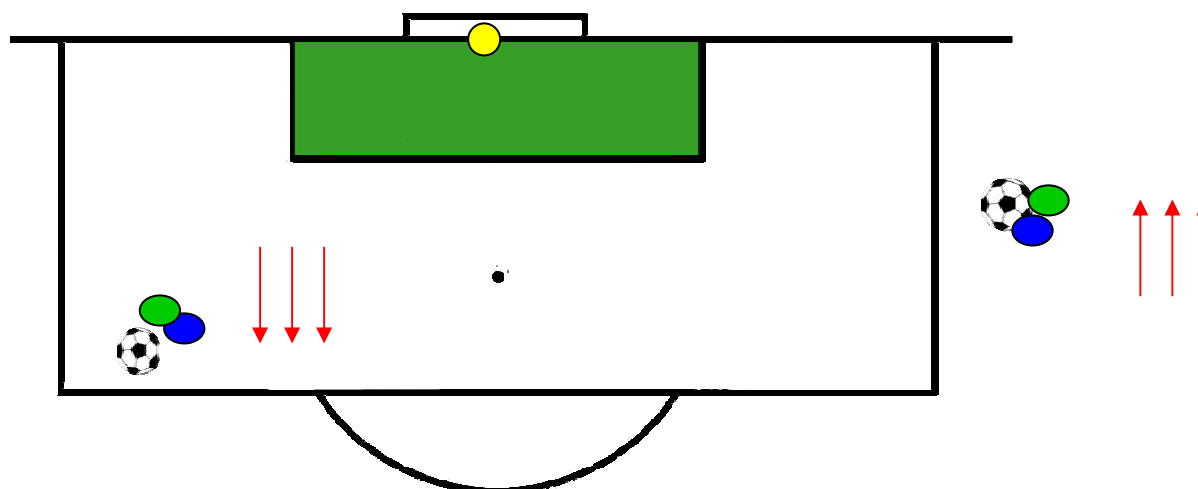
The decision to penalise the original offence must be taken within the next few seconds.

If the offence warrants a caution, it shall be issued at the next stoppage.

- **however, unless there is a clear advantage, it is recommended that the referee stops play and cautions the player immediately**
- **if the caution is NOT issued at the next stoppage, it cannot be shown later**

If the defender commits a foul, it is advisable to wait for the possibility of an advantage.

If the attacker commits a foul, it is recommended to whistle for the foul unless there is a clear promising attack.



"The Referee:

- stops the match if, in his opinion, a player is seriously injured and ensures that he is removed from the field of play. An injured player may only return to the field of play after the match has restarted"

The referee shall adhere to the following procedure when dealing with injured players:

- **play is allowed to continue until the ball is out of play if a player is, in the opinion of the referee, only slightly injured**
- **play is stopped if, in the opinion of the referee, a player is seriously injured**



Referees must follow the instructions below when dealing with injured players:

- **after questioning the injured player, the referee may authorise one, or at most two doctors, to enter the field of play to assess the injury and arrange the player's safe and swift removal from the field of play**
- **the stretcher-bearers should enter the field of play with a stretcher at the same time as the doctors to allow the player to be removed as quickly as possible**



Referees must follow the instructions below when dealing with injured players:

- **the referee shall ensure an injured player is safely removed from the field of play**
- **a player is not allowed to receive treatment on the field of play**



Referees must follow the instructions below when dealing with injured players:

- **any player bleeding from a wound must leave the field of play. He may not return until the referee is satisfied that the bleeding has stopped**
- **a player is not permitted to wear clothing with blood on it**



Referees must follow the instructions below when dealing with injured players:

- **as soon as the referee has authorised the doctors to enter the field of play, the player must leave the field of play, either on a stretcher or on foot. If a player does not comply, he shall be cautioned for unsporting behaviour**





Injured Players – Instructions

17

Referees must follow the instructions below when dealing with injured players:

- **an injured player may only return to the field of play after the match has restarted**
- **when the ball is in play, an injured player must re-enter the field of play from the touch line. When the ball is out of play, the injured player may re-enter from any of the boundary lines**

Referees must follow the instructions below when dealing with injured players:

- **irrespective of whether the ball is in play or not, only the referee is authorised to allow an injured player to re-enter the field of play**
- **the referee may give permission for an injured player to return to the field of play if an assistant referee or the fourth official verifies that the player is ready**

Referees must follow the instructions below when dealing with injured players:

- **if play has not otherwise been stopped for another reason, or if an injury suffered by a player is not the result of a breach of the Laws of the Game, the referee shall restart play with a dropped ball**
- **the referee shall allow for the full amount of time lost through injury to be played at the end of each period of play**
- **once the referee has decided to issue a card to a player who is injured and has to leave the field of play for treatment, the referee shall issue the card before the player leaves the field of play**

Exceptions to this ruling are to be made only when:

- **a goalkeeper is injured**
- **a goalkeeper and an outfield player have collided and need immediate attention**
- **A severe injury has occurred, e.g. swallowed tongue, concussion, broken leg**

"The Referee:

- acts on the advice of assistant referees regarding incidents which he has not seen
- ensures that no unauthorised persons enter the field of play"





Cooperation with Assistant Referees

22

“Acts on the advice of assistant referees” means that:

- **all assistant referee signals should be acknowledged**
 - by following the advice given **or**
 - by clearly waving down the signal



Cooperation with Fourth Official

23

The Referee:

- **acts on the advice of the fourth official regarding violent conducts which he has not seen**

The Referee:

- takes action against team officials who fail to conduct themselves in a responsible manner and may, at his discretion, expel them from the field of play and its immediate surrounds



The Referee must be particularly mindful of irresponsible behaviour by team officials directed at assistant referees or the fourth official.

The pre-game discussion should include agreement regarding when and how other members of the officiating team can bring irresponsible behaviour directed at them by team officials to the referee's attention.





Trifling (Minor) Offences

26

The Laws of the Game are intended to ensure that games are played with as little interference as possible.

Constant whistling for minor and dubious infringements may cause bad feeling and anger from players and spectators.



More than one offence occurring at the same time

27

Committed by the same player:

- **the referee must punish the more serious offence when a player commits more than one offence at the same time**
- **the play should be restarted with a free kick or penalty kick**



More than one offence occurring at the same time

28

Offences committed by two players from the same team:

- the referee shall punish the most serious offence when players commit more than one offence at the same time
- play shall be restarted according to the most serious offence committed

Offences committed by players from different teams:

- the referee shall stop play and restart it with a dropped ball from the position of the ball at the time of the stoppage*



FIFA

For the Game. For the World.



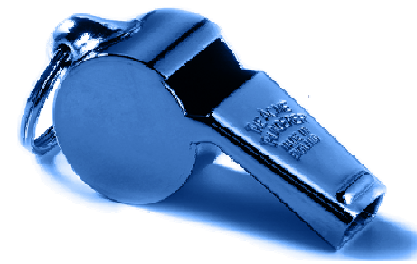
Guidelines for Referees



Topics

30

Positioning
Referee signals
Use of the whistle
Body language



The best position is one from which the referee can make the right decision”

- in practice, the “best position” is never known in advance – it is revealed after the fact as “best” only if it has enabled the referee to see what most needed to be seen
- accordingly, all recommendations about positioning are based on probabilities and must be adjusted using specific information about the teams, the players, and events in the match up to that point

The positions suggested in the following graphics are basic and recommended to referees.

The reference to a “zone” is intended to emphasize that every recommended position is actually an **area** within which the referee is most likely to optimize his effectiveness.

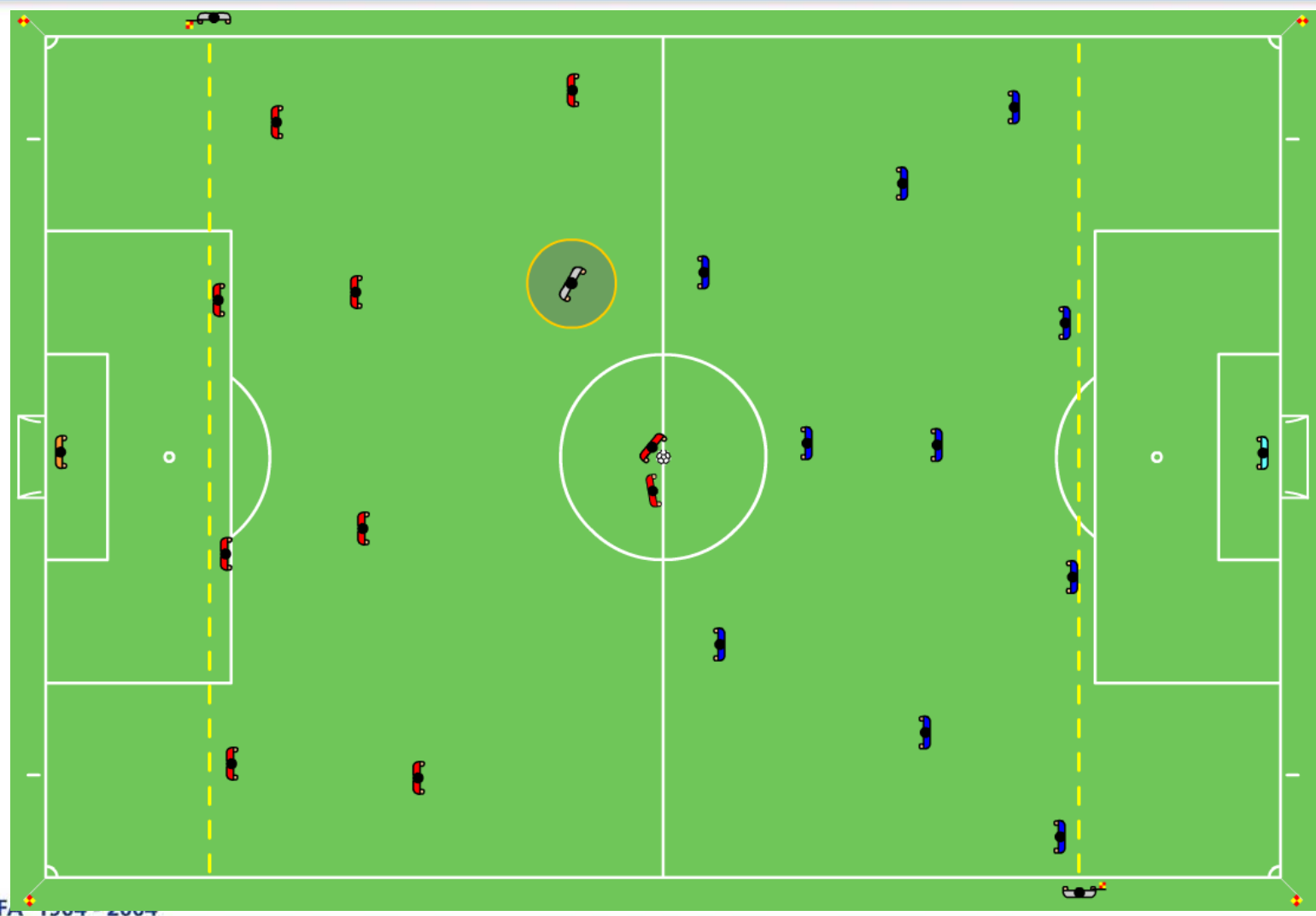
The zone can be larger, smaller, or differently shaped depending on circumstances at the moment.





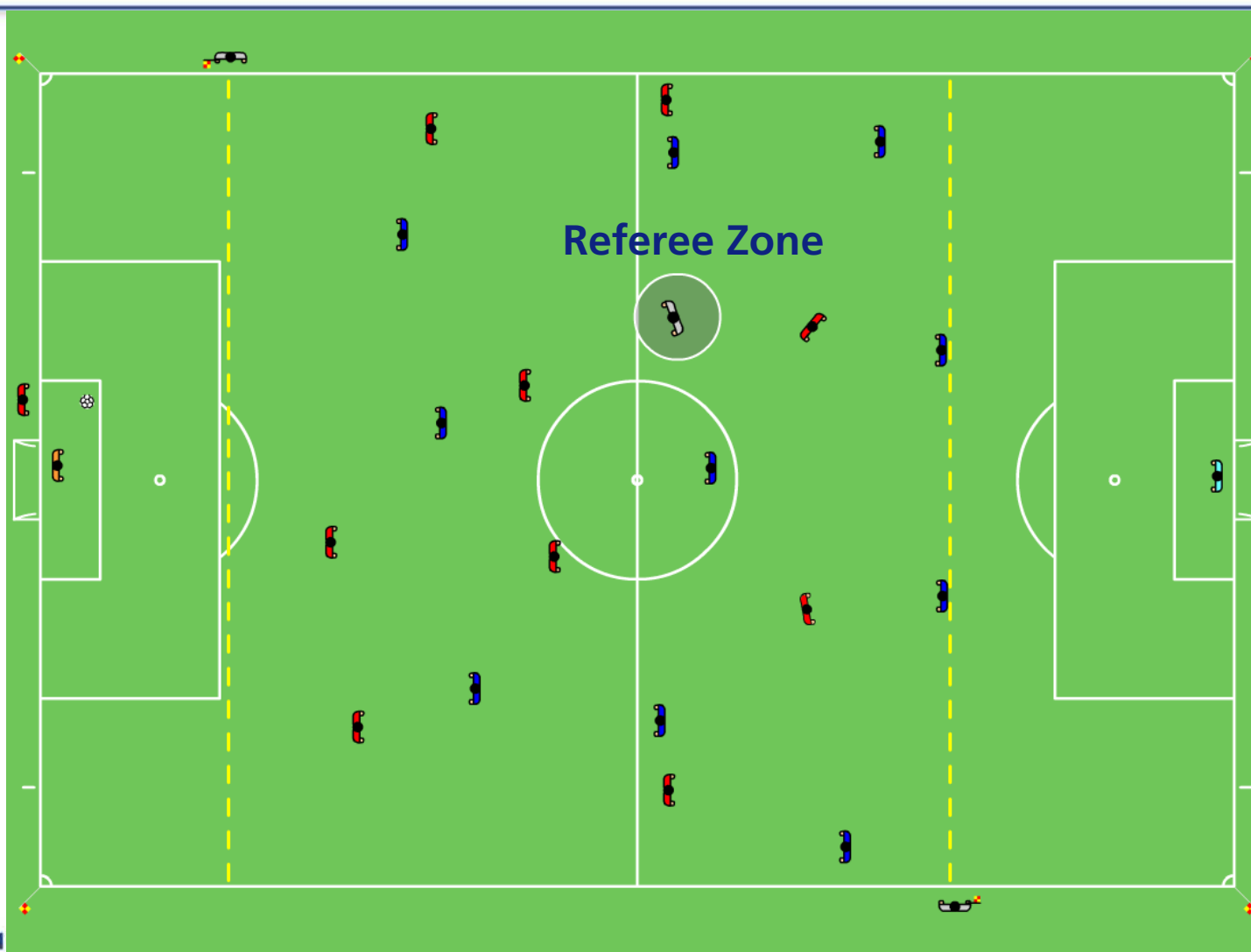
Positioning in dead-ball situations

Kick off





Positioning in dead-ball situations Goal Kick

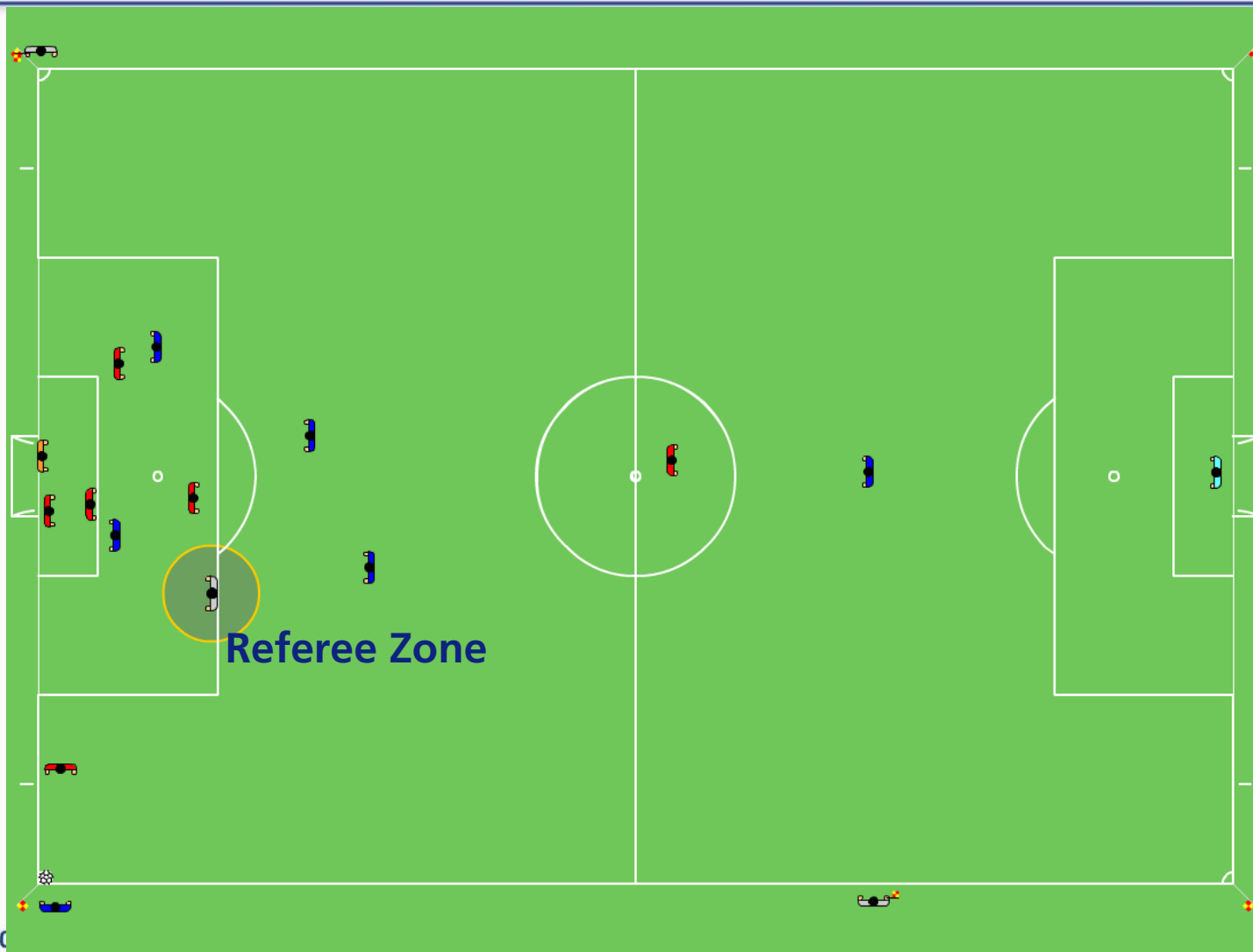




Positioning in dead-ball situations

Corner Kick. 1

35

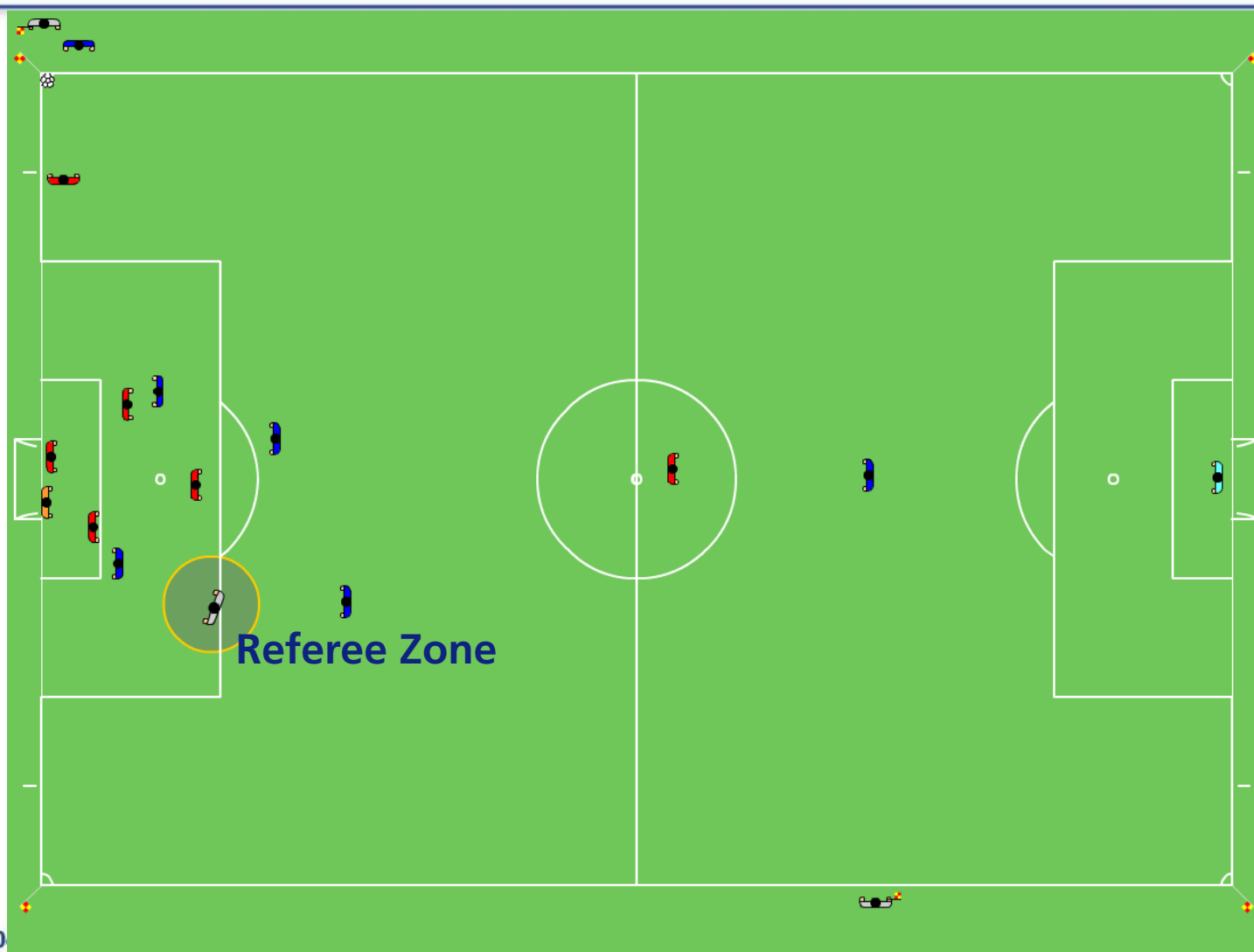




Positioning in dead-ball situations

Corner Kick. 2

36

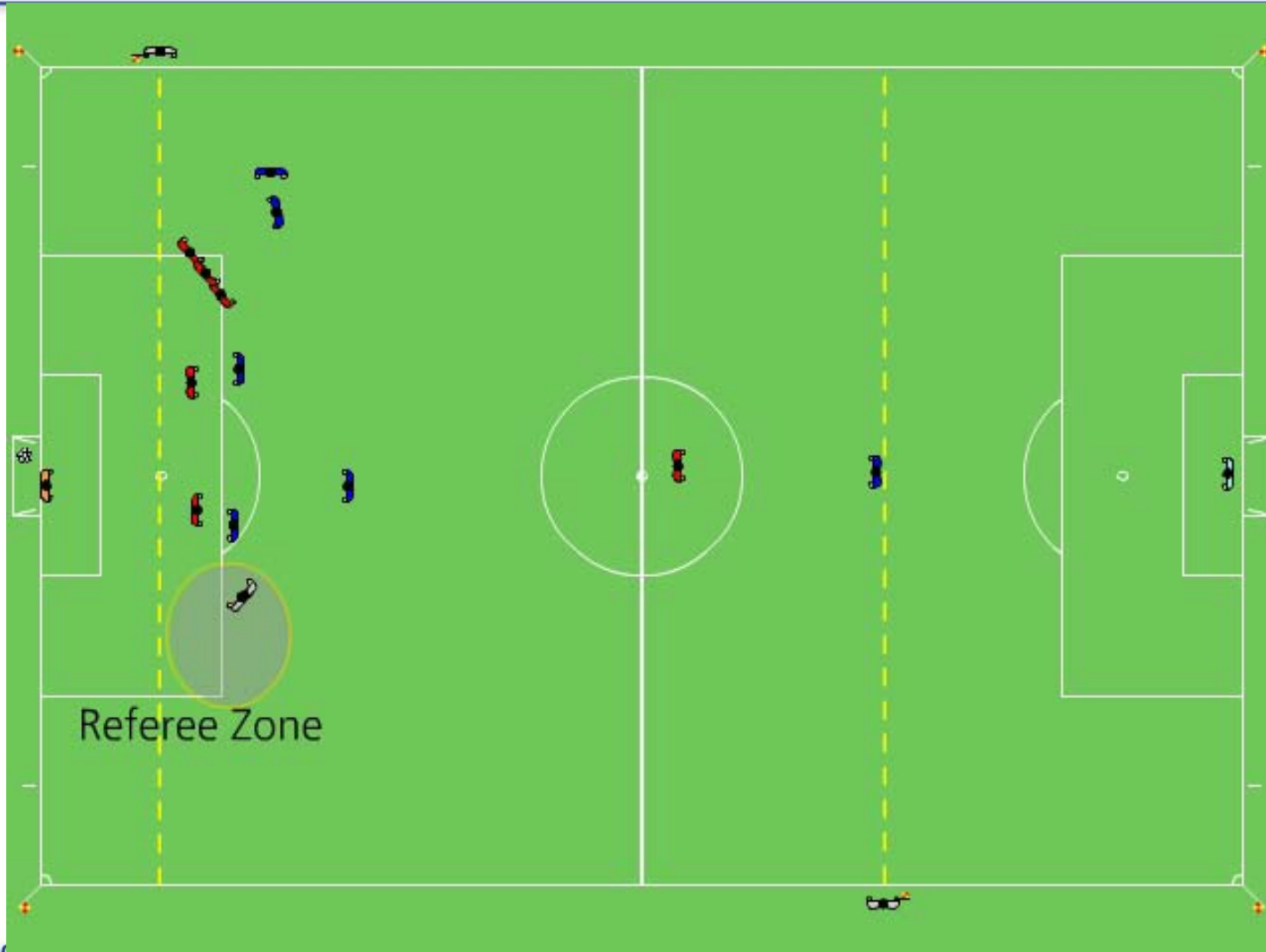




Positioning in dead-ball situations

Free Kick. 1

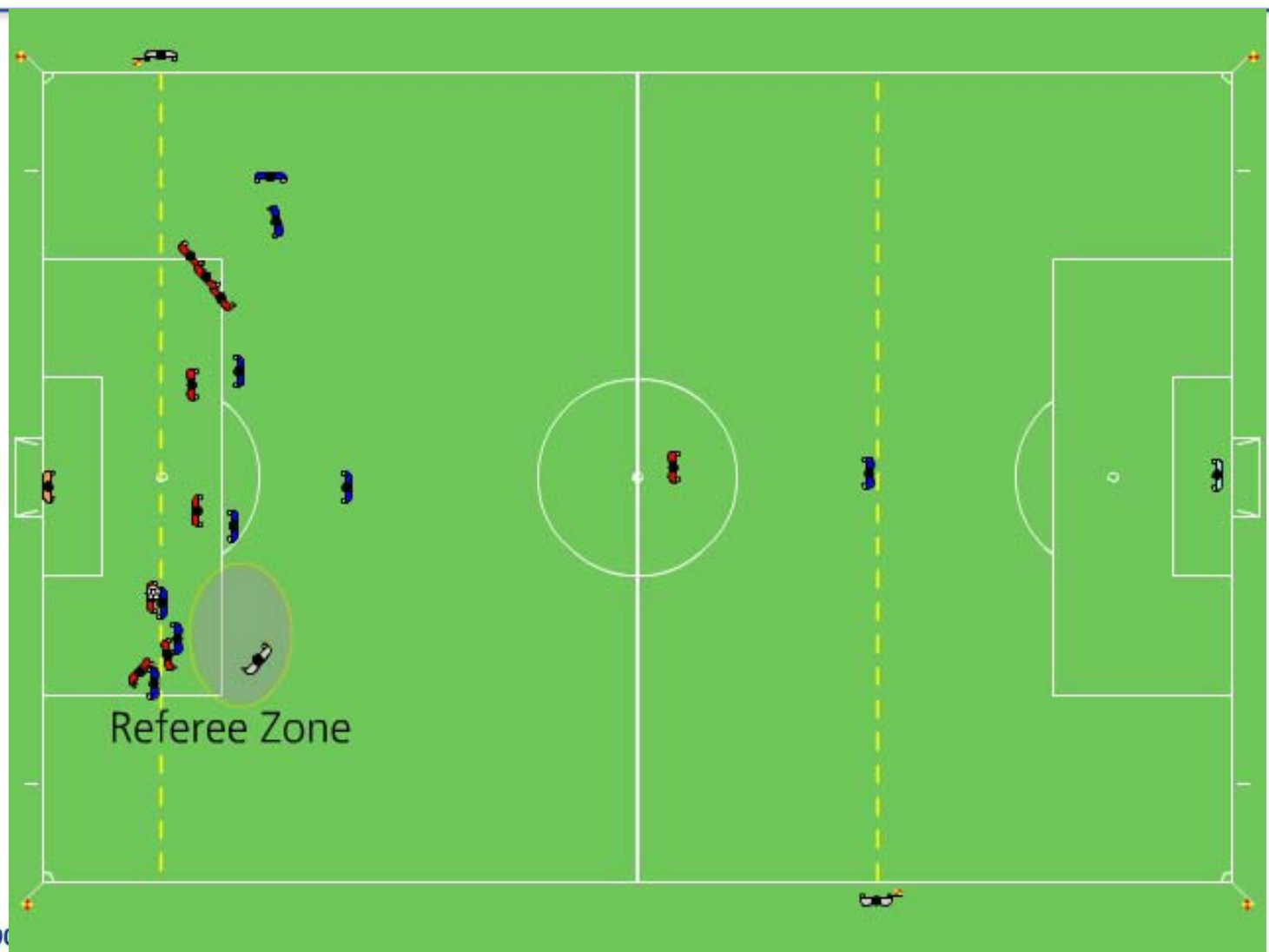
37





Positioning in dead-ball situations

Free Kick. 2

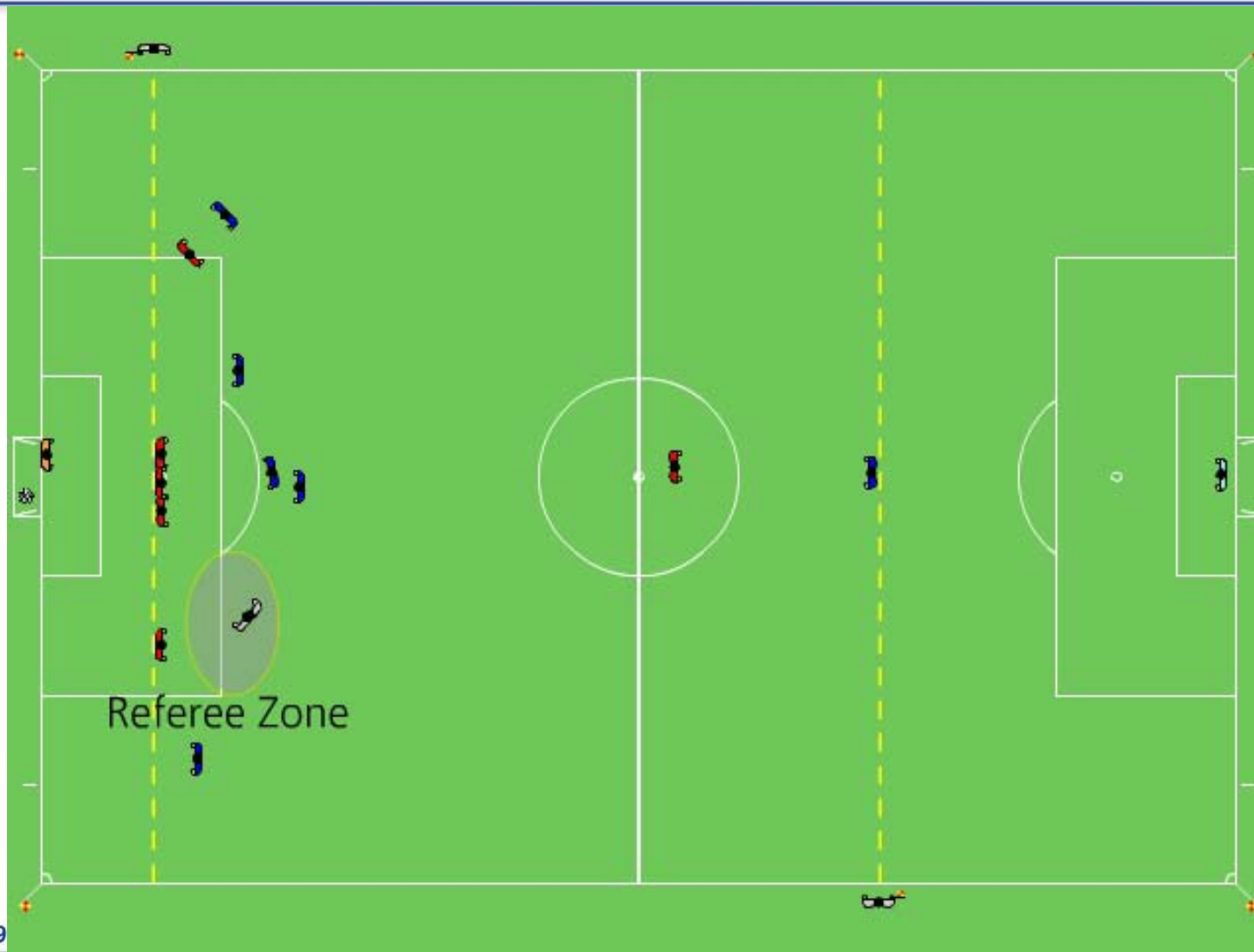




Positioning in dead-ball situations

Free Kick. 3

39

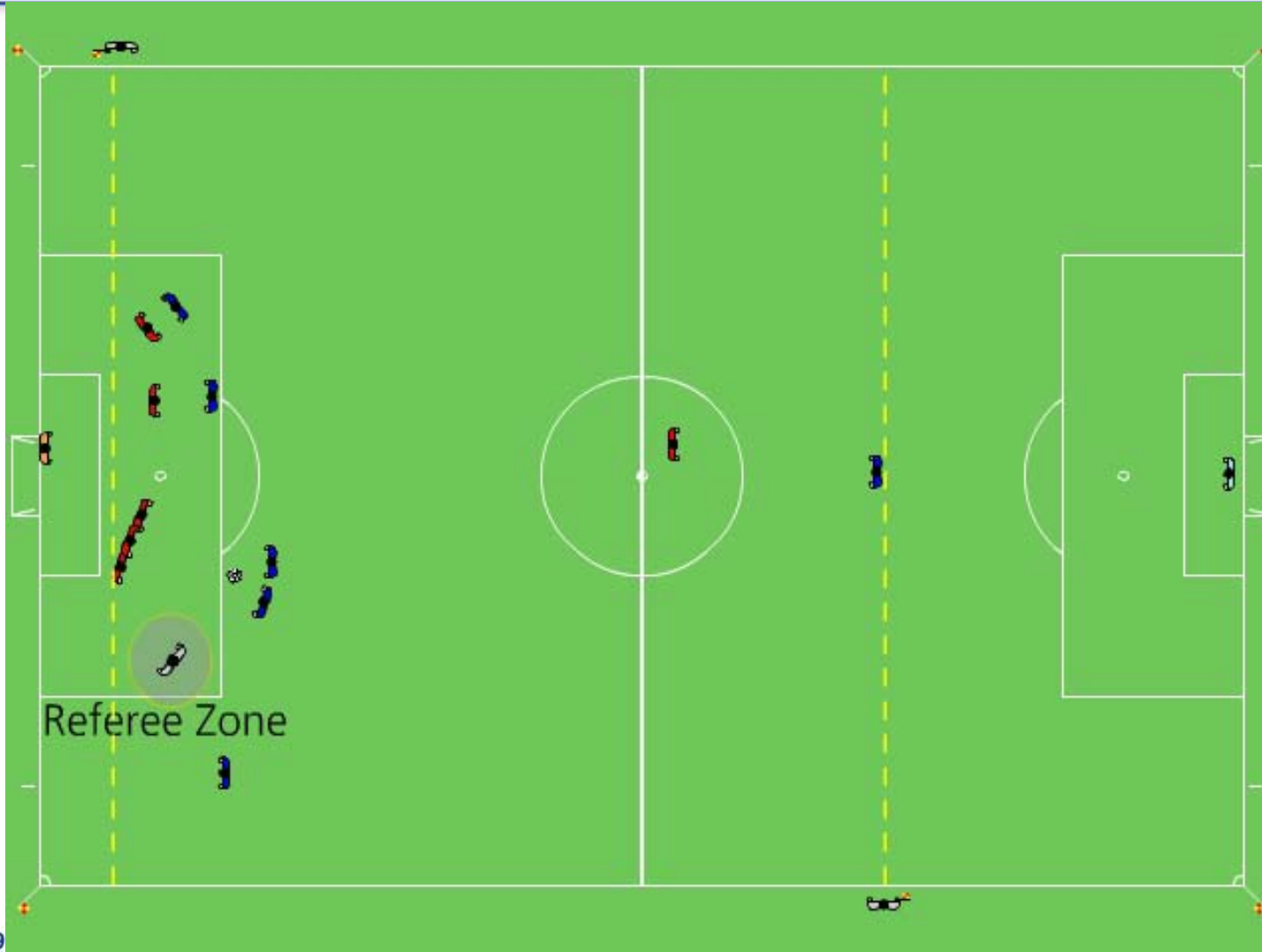




Positioning in dead-ball situations

Free Kick. 4

40

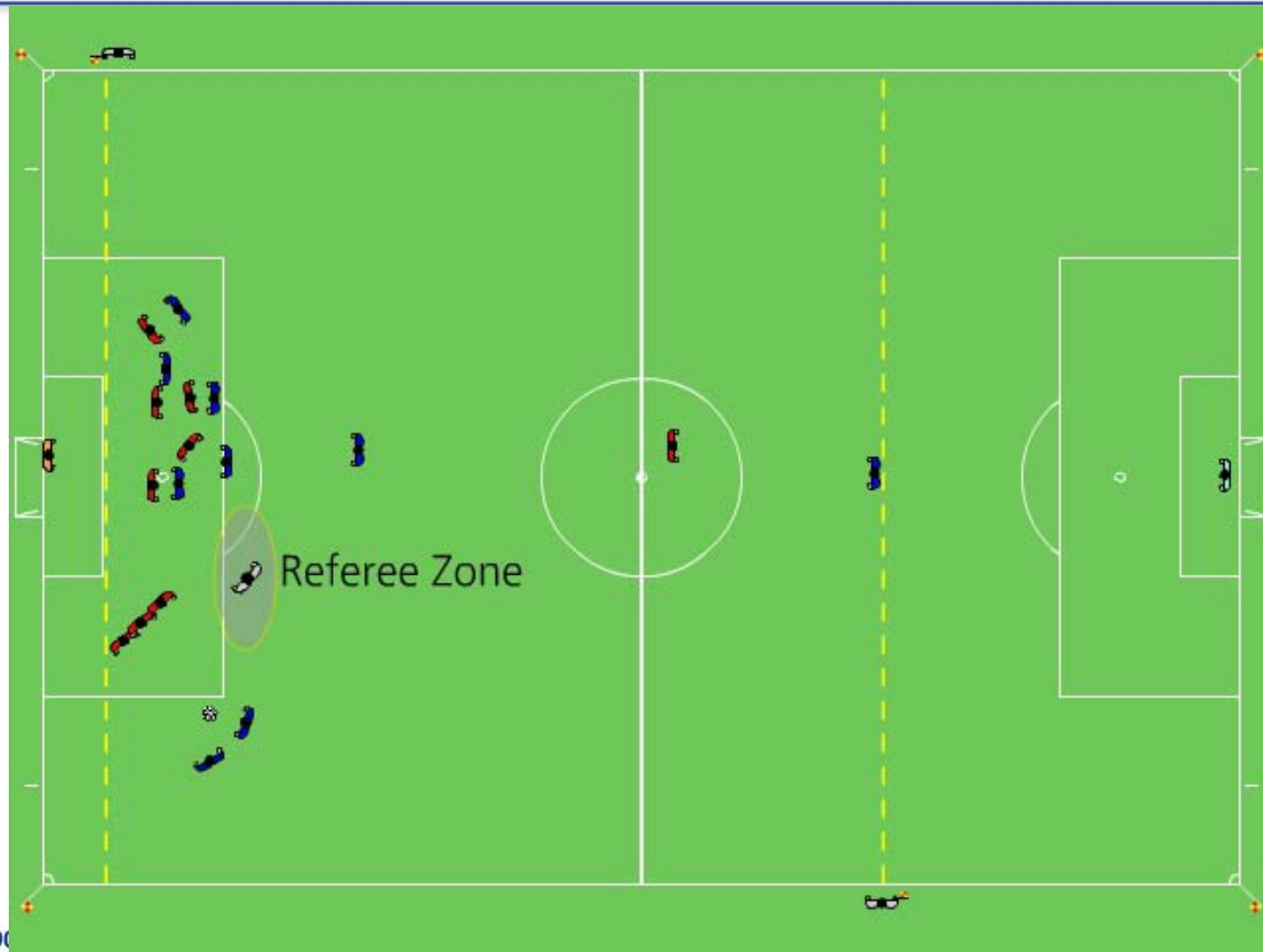




Positioning in dead-ball situations

Free Kick. 5

41

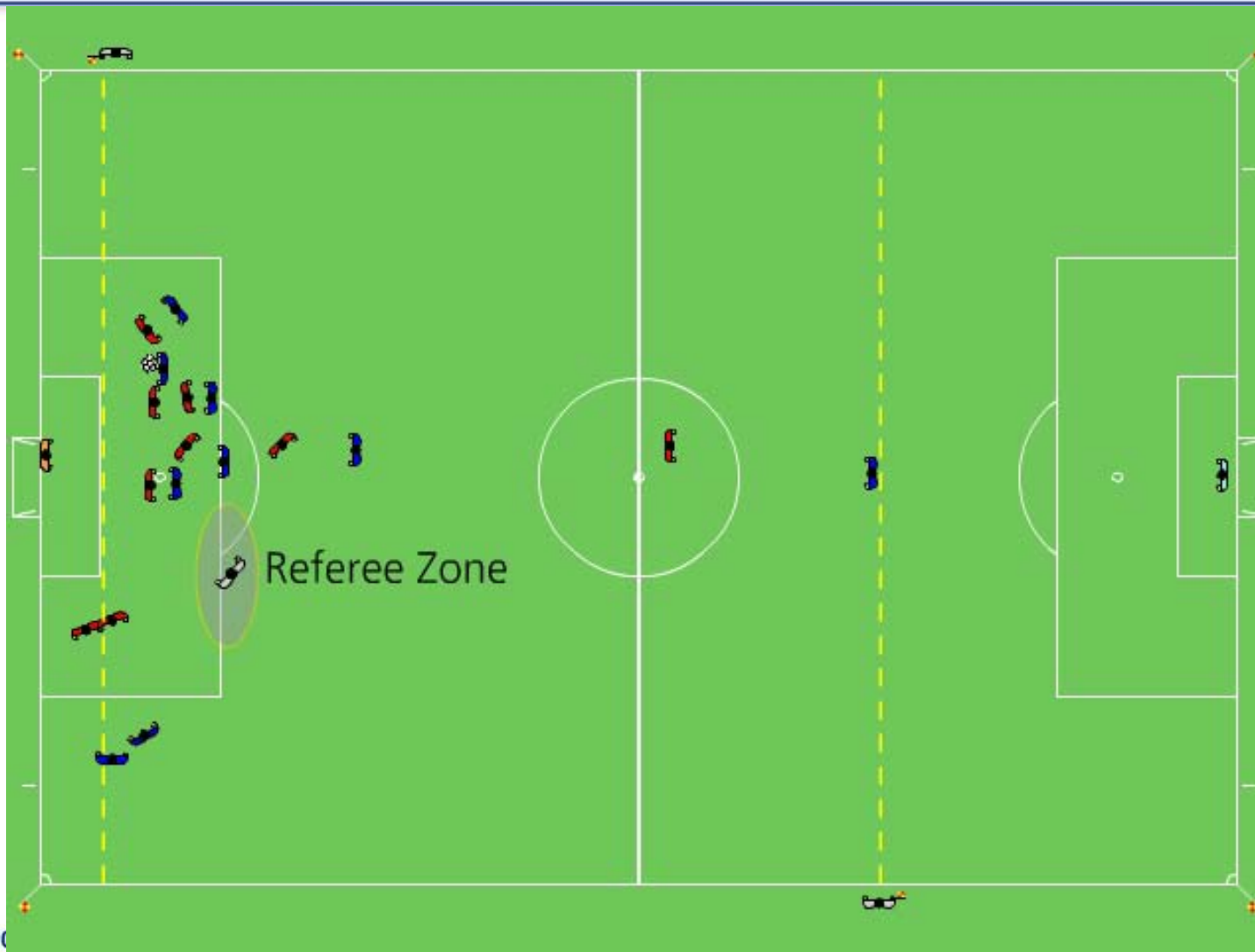




Positioning in dead-ball situations

Free Kick. 6

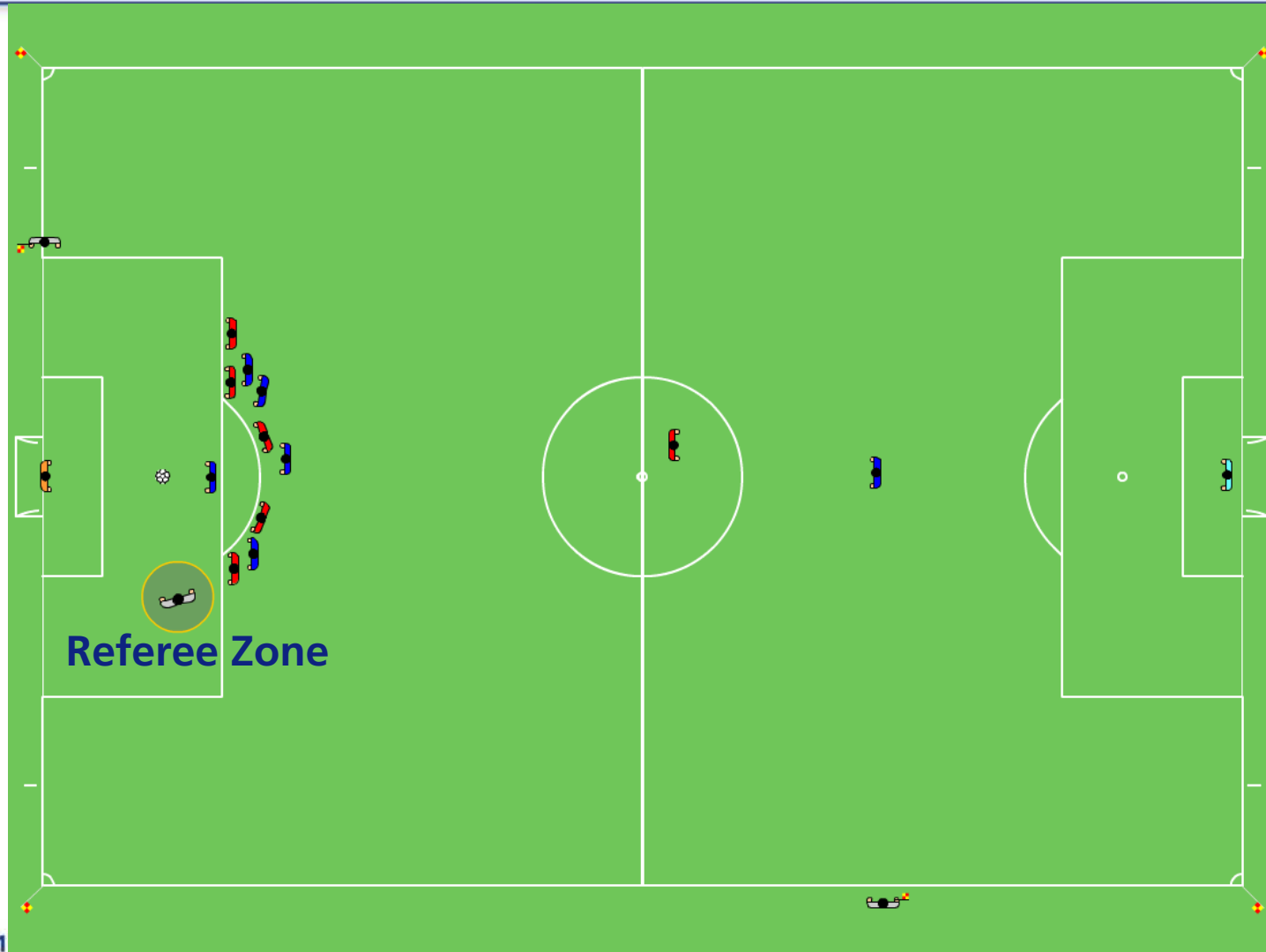
42



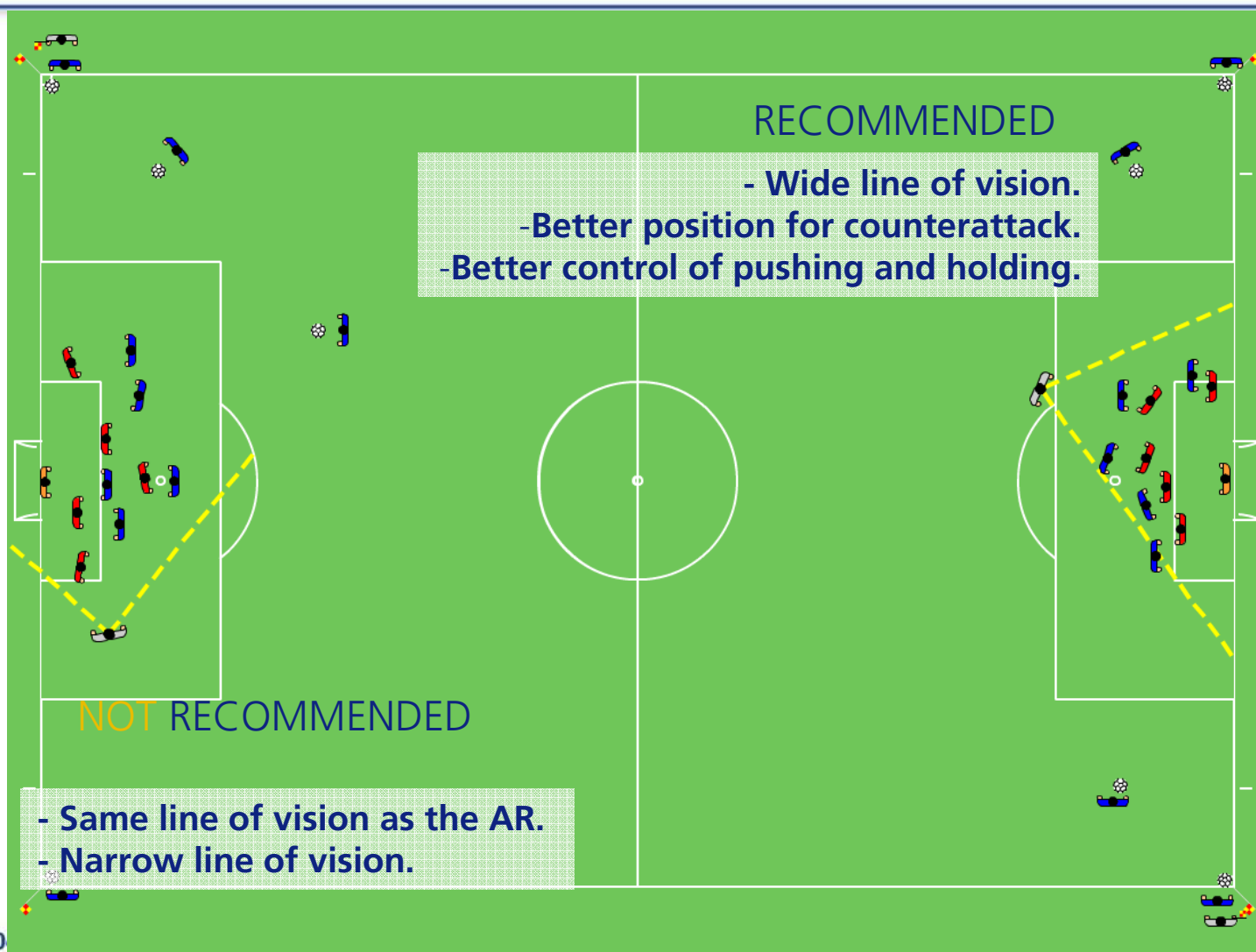


Positioning in dead-ball situations Penalty Kick

43



Positioning in dead-ball situations



The play should be between referee and the lead assistant referee.

- **the lead assistant referee should be within the referee's field of vision**

The referee should use a wide diagonal system.

- **staying towards the outside of the play makes it easier to keep play and the lead assistant referee within the referee's field of vision**



The referee should be close enough to see play without interfering with play.

“**W**hat needs to be seen” is not always in the vicinity of the ball. The referee should also pay attention to:

- **aggressive individual player confrontations off the ball**
- **possible offences in the area towards which play is heading**
- **offences occurring after the ball is played away**



Free Kicks.

Indirect free kicks.

Direct free kick.



Disciplinary Sanctions.

Caution.

Sending Off.



Advantage.



The whistle **is** needed to:

- **start play (1st, 2nd half), after a goal**
- **stop play**
 - for a free kick or penalty kick
 - If match is suspended or terminated
 - when a period of play has ended due to the expiration of time
 - For a goal kick, corner kick, throw-in or a goal when the ball crossed the touchline or goal line but the ball appears still to be in play
- **restart play at**
 - free kicks when the wall is ordered back the appropriate distance
 - penalty kicks
- **restart play after it had been stopped due to**
 - the issue of a yellow or red card for misconduct
 - Injury
 - substitution



The whistle **is NOT** needed

- **to stop play for**
 - a goal kick, corner kick, throw-in
 - a goals
- **to restart play from**
 - a free kick, goal kick, corner kick, throw-in





A whistle which is used too frequently unnecessarily will have less impact when it **is** needed.

When a discretionary whistle is needed to start play, the referee should clearly announce to the players that the restart may not occur until after that signal.



Body Language

53

Body language is a tool that the referees uses to:

- **help him control the match**
- **show authority and self-control**

Body language is not:

- **an explanation of the decision**